



Nepal's Policy and Activities on Climate Change



National Conference on Climate Change and Green Jobs

28 April 2011 (B.S. 2068.1.15), Thursday
Hotel Yak and Yeti, Kathmandu

Batu Krishna Uprety

Joint-Secretary (Technical) and Chief

Climate Change Management Division, MoE

Member, LEG to UNFCCC

Nepal's Participation in CC Regime

UNFCCC

- Text adopted: 9 May 1992 at NY
- Signature: 12 June 1992 during Rio Earth Summit
- Ratification: 2 May 1994
- Entry into force in Nepal: 31 July 1994
- INC Report, July 2004 and shared with Parties

Kyoto Protocol

- Text adopted: 11 December 1997 in Kyoto
- Deposition of instrument of Accession: 16 September 2005
- Entry into force (global) 16 February 2005; and Nepal: 14 December 2005

DNA-CDM/NIE-AF

- MoE to function as DNA for CDM activities on 22 December 2005
- MoE to function as NIE for Adaptation Fund on 7 May 2010 (Government decision)

Emissions and Removals (Gg), 1994

GHG Source and Sink Categories	CO ₂		CH ₄	N ₂ O
	Emission	Removal		
Energy	1465			
Industrial process	165			
Agriculture			867	29
Landuse Change and Forestry	22895	-14778		
Waste			10	1
Total emissions and removals	24525	-14778	877	30
Net emissions	9747		877	30

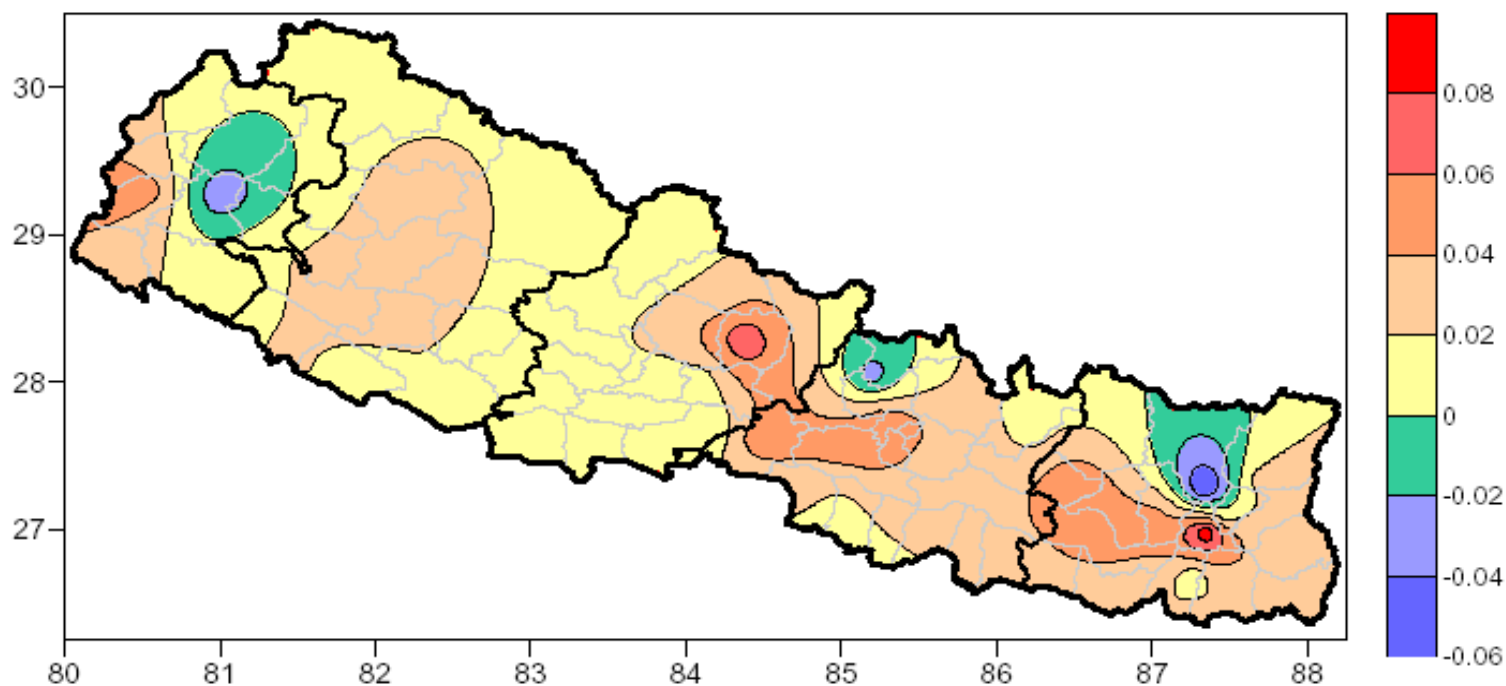
Total CO₂ Equivalent Emissions, 1994

GHG Type	Emission (Gg)	GWP	CO ₂ eq	% of Total
CO ₂	9,747	1	9,747	25
CH ₄	948	21	19,908	51
N ₂ O	31	310	9,610	24
Total			39,265	100

Recent initiative on Second National Communication will help to update it

Observed Trends in Temperature

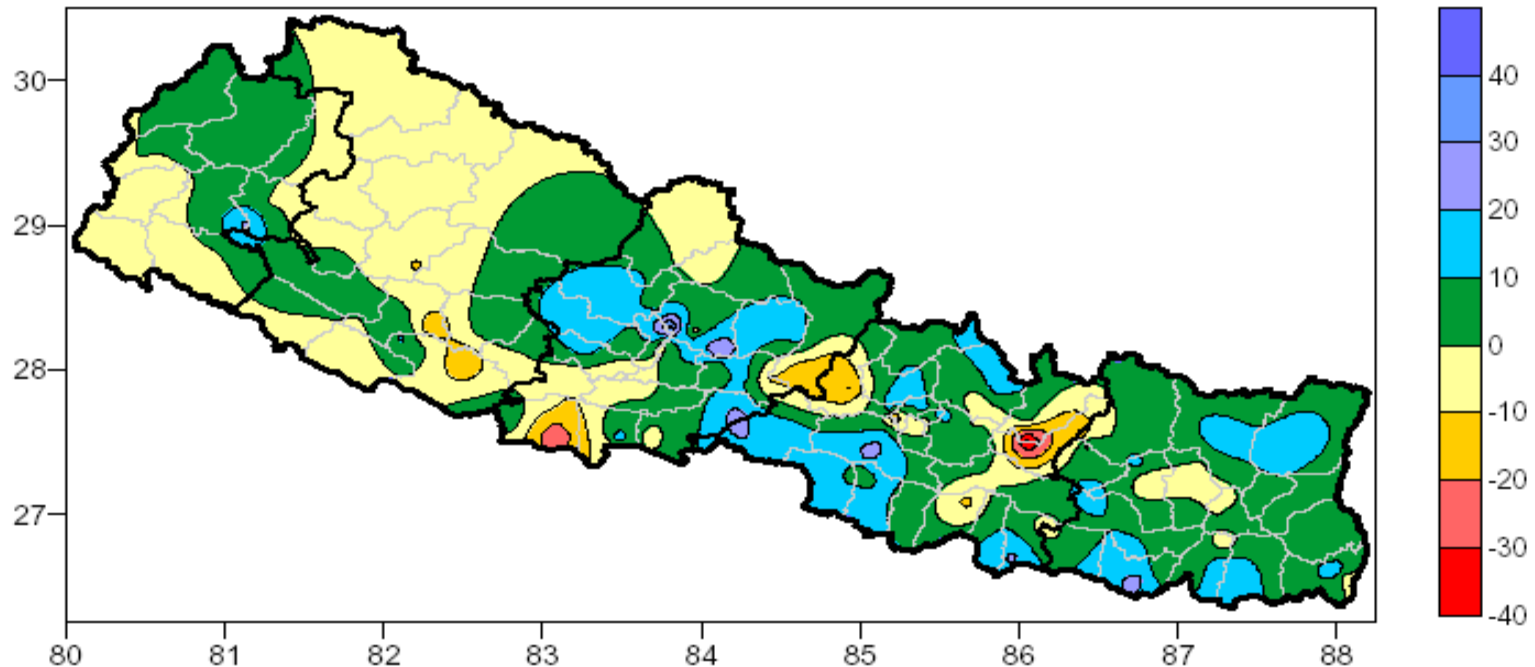
- Average warming at an @ $0.06^{\circ}\text{C}/\text{year}$ in 49 stations from 1977 to 1994 (Shrestha et al.,1999)
- Warming @ $0.04^{\circ}\text{C}/\text{year}$ in 45 stations from 1976 to 2006 (Practical Action 2009)



Spatial variation of Annual Mean Temperature Trends $^{\circ}\text{C}$ (45 stations, 1976-2005)

Precipitation

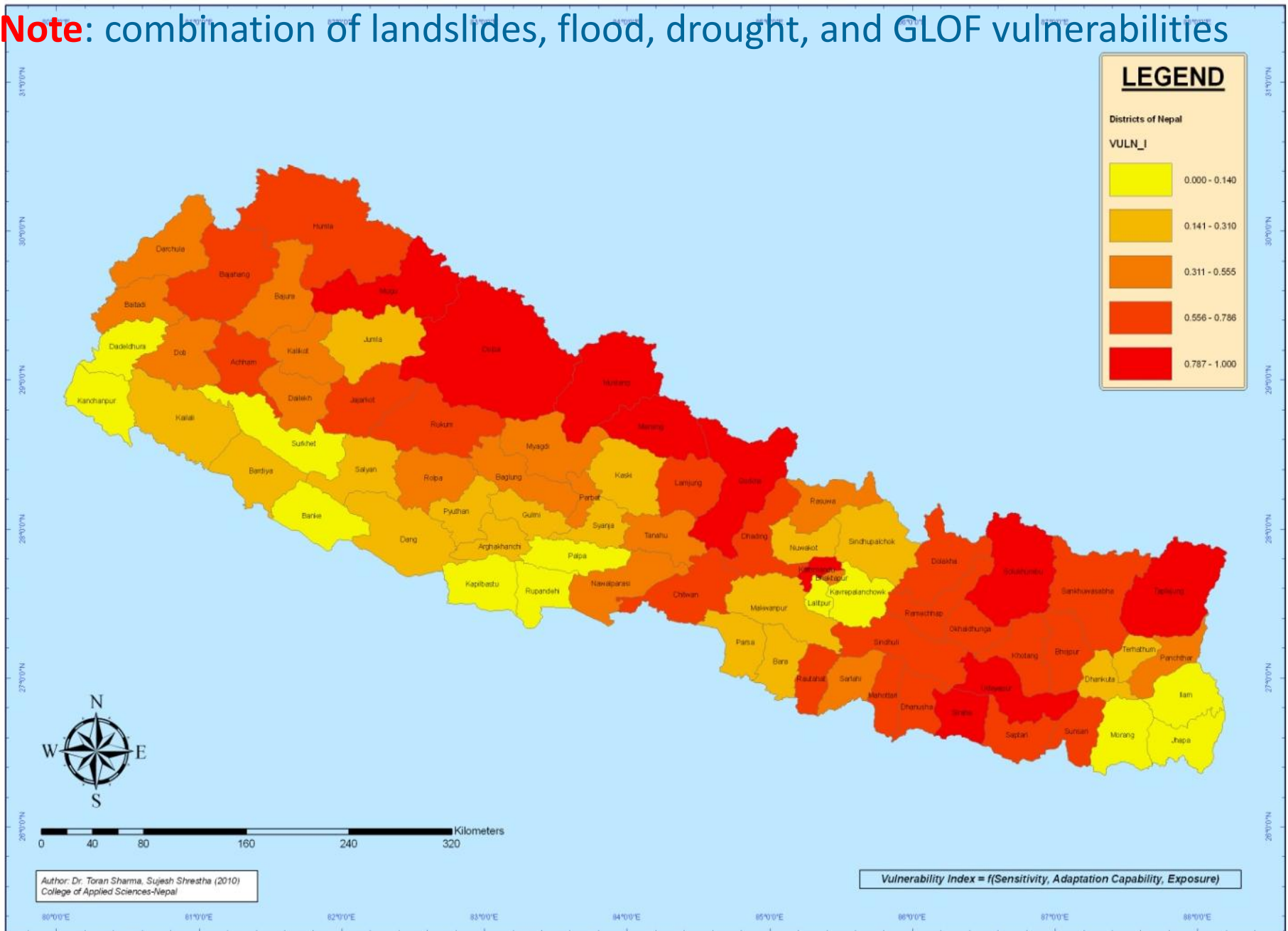
- **No significant trends** (Shrestha et.al, 2000 and Practical Action 2009)
- High inter-annual variation of rainfall, particularly monsoon precipitation, and **very uncertain observed trends**



Annual Precipitation Trends (mm/yr)

OVERALL VULNERABILITY MAP OF NEPAL

Note: combination of landslides, flood, drought, and GLOF vulnerabilities



Issues



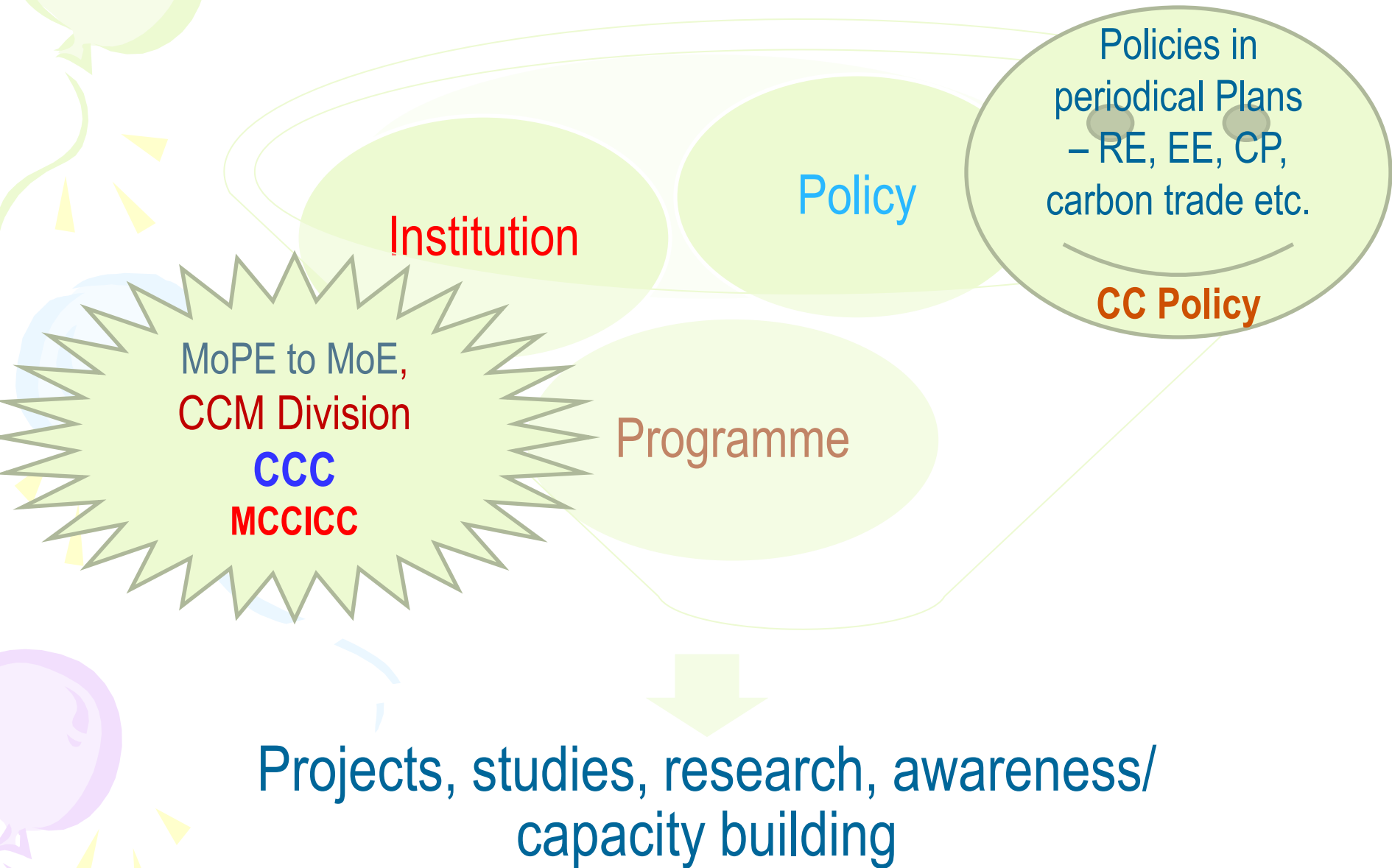
Issues ...



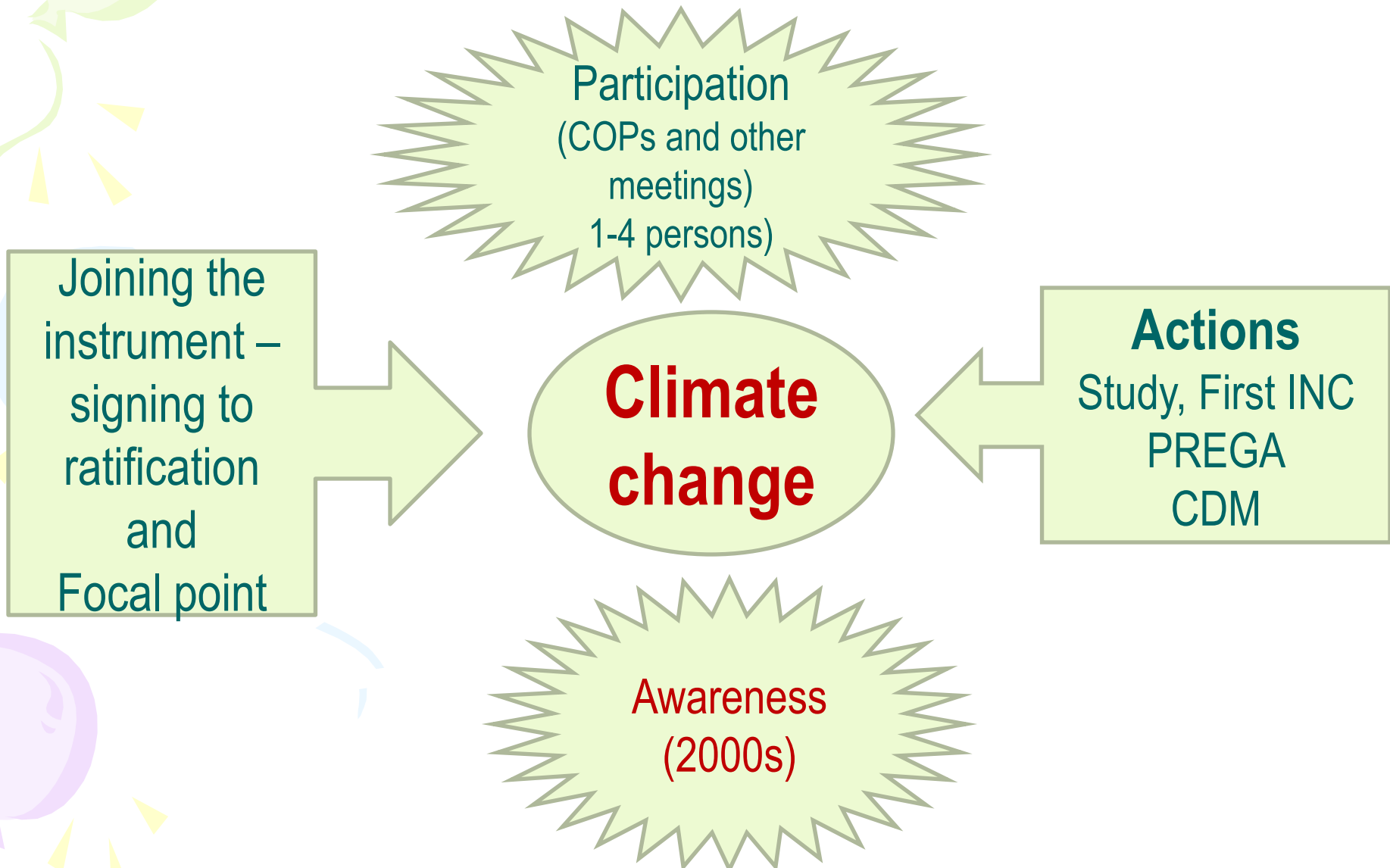
Issues ...

- Snow/glaciers melting
- Effect/Impact on agriculture
- Impact on health
- Impact on water resources – hydropower, irrigation, drinking water etc.
- Impact forest and biodiversity
- Impact on infrastructures and urban areas
-
-

Responses



Initiatives (1992-2006)



MoE Initiatives (2007-2009)

Participation (5 to > 90)
and COPs preparation

Programmes/Projects

- NCSA
- NAPA
- Capacity Strengthening
- PPCR
- TNA
- SNC
- DNA/CDM (SNV)

**Climate
change**

CCC

Policy and
Institutions

Other Initiatives

- CDM approval system
- Awareness and Capacity Building
- Accessing the climate change funds
- MoU with 14 donors and partners
- Workshops and conferences
- COP15 related activities

April 2010 onwards - CCMD

Cancun
Preparation

NAPA
endorsement

MAI

International
Conference (IC)

MoU
ICIMOD & DFID

Climate Change
Activities

LAPA

CC Policy

Access to
Adaptation
Fund Board

- CR Planning Process
- LCD path
- REDD
- Down scaling and CBVA

PPCR

Missions

NAPA Implement.. -
LDCF - PIFs, Bilateral -
DFID/ EU and USAID

SREP

MCCICC

- **International Expert Consultation on MI**
- **LEG 18 meeting**
- **CDM Workshop**

Climate Change Policy, 2011

Approval
17.01.2011

Vission

Address the adverse impacts of climate change, by considering climate justice, through the pursuit of environmental conservation, human development, and sustainable development all contributing toward a prosperous society

Objectives

CC Policy

Mission

Mitigate the adverse impacts of climate change, utilise opportunities, and improve livelihood through CC-friendly development

Policies

Goal

Improve livelihood by mitigating impacts, adapting with, adopting low carbon development path

Policy Objectives

- Establish a Climate Change Center;
- Implement climate adaptation-related programmes;
- Reduce GHG emissions by promoting the use of clean energy, and by increasing energy efficiency and encouraging the use of green technology;
- Enhance the climate adaptation and resilience capacity of local communities for management and optimum utilization of natural resources;
- Adopt a low-carbon development path by pursuing climate-resilient socio-economic development;
- Develop capacity for identifying and quantifying present and future impacts of climate change, adapting to climate risks and adverse impacts of climate change; and
- Improve the living standard of people by maximum utilization of the opportunities created from the climate change-related conventions, protocols and agreements.

Climate adaptation,
disaster and risk
reduction

Low carbon
development
and climate
resilience

Climate-friendly
NRM

**Policy Focus
7 Areas**

Access to financial
resources and
utilisation

Technology
development,
transfer and
utilisation

Capacity building,
people's participation and
empowerment

Study and
research

Climate Change Fund, and Climate Award

Nepal's NAPA - Broad Objectives

NAPA

Mainstreaming Climate Change
Agenda into National Development

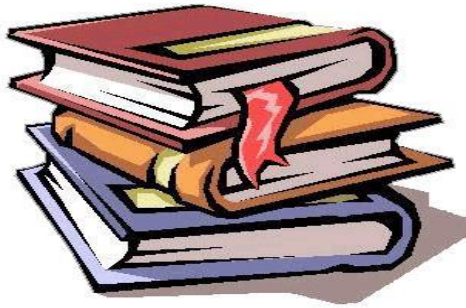
Poverty
reduction

Livelihoods
improvement/
diversification

Building
resilience



Vulnerability assessment through:

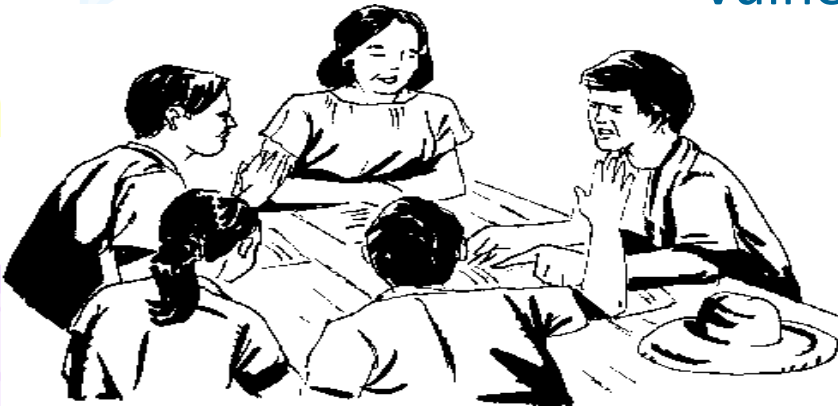


Stocktaking

GIS Mapping -
vulnerability



Transect Exercise



Group discussions



Consultations

NAPA Prioritized Integrated Projects

1. Increasing community based adaptation through integrated management of agriculture, water, forests and biodiversity
2. Building Adaptive Capacity of Vulnerable Communities Through Climate Resilient Agricultural Development
3. Community Based Disaster Management for Facilitating Climate Adaptation
4. GLOF Monitoring and Disaster Risk Reduction
5. Forest and Ecosystem Management for Supporting Climate Led Adaptation Innovations
6. Adapting to Climate Challenges in Public Health
7. Ecosystem Management for Climate Adaptation
8. Empowering Vulnerable Communities through Sustainable Management of Water Resource and Clean Energy Supply
9. Promoting Climate Smart Urban Settlement

Additional Activities

- Nepal is preparing two proposals for LDCF - \$ 12m (profiles 3 & 4 - DRR/GLOF, and 5 & 7 - EBA)
- Bilateral - DFID/EU - Pound 16m (DFID - 10m, and EU - 6m) with focus on profile 1 (community-based adaptation)
- USAID Hariyo Ban Programme - US\$ 11.9m for climate adaptation

Additional Activities

- LAPA design framework
- Climate Resilience
- Low carbon development strategy i process
- Strengthening the capacity of the climate change and the environment

Political Commitment/
Clear Direction

**Changing the
Gear**

**Field level
Plan Preparation to
Implementation**

Finance

Translating Commitments into Actions

Technology

Capacity Building

